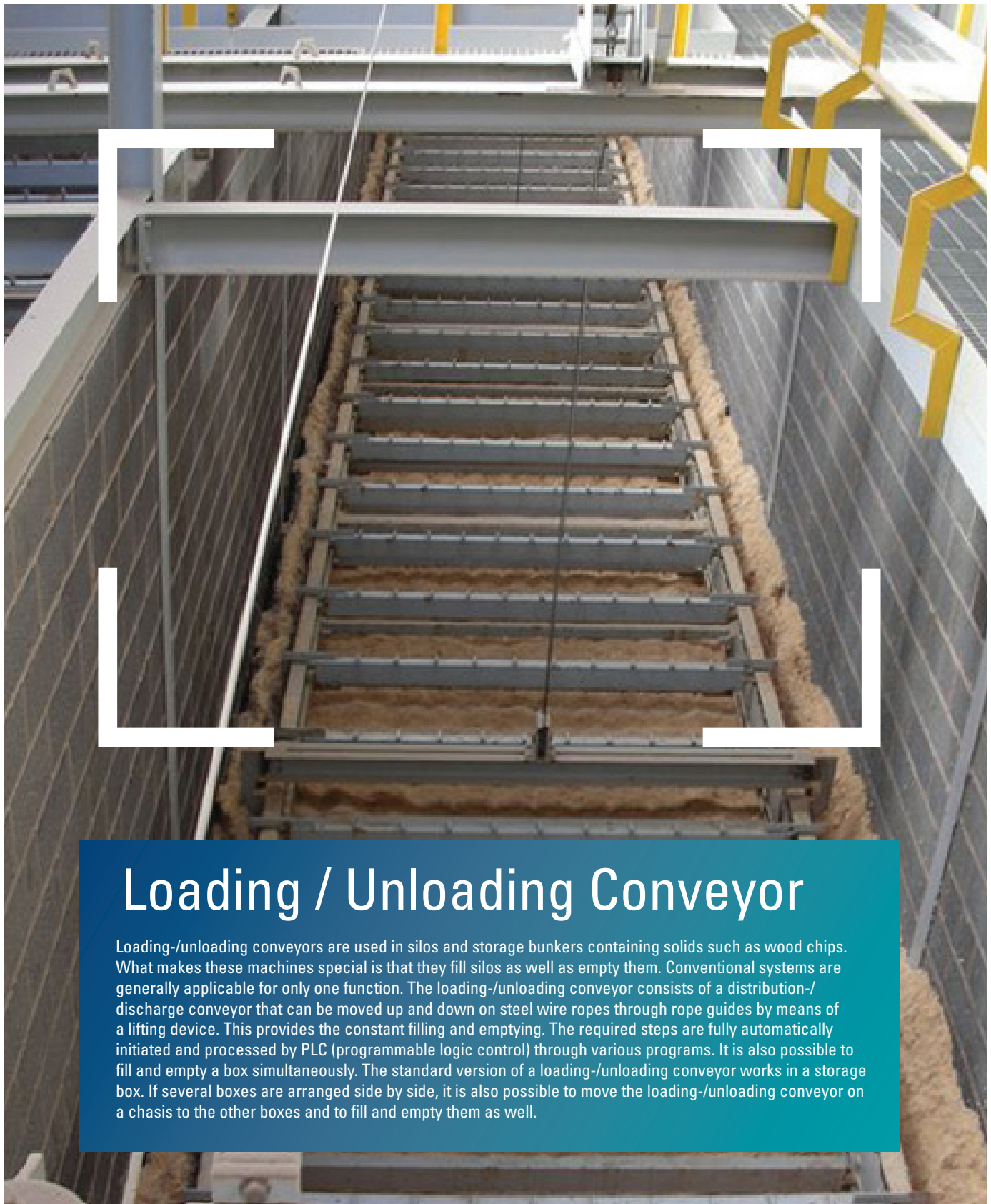


# Loading / Unloading Conveyor

**Vecoplan**<sup>®</sup>



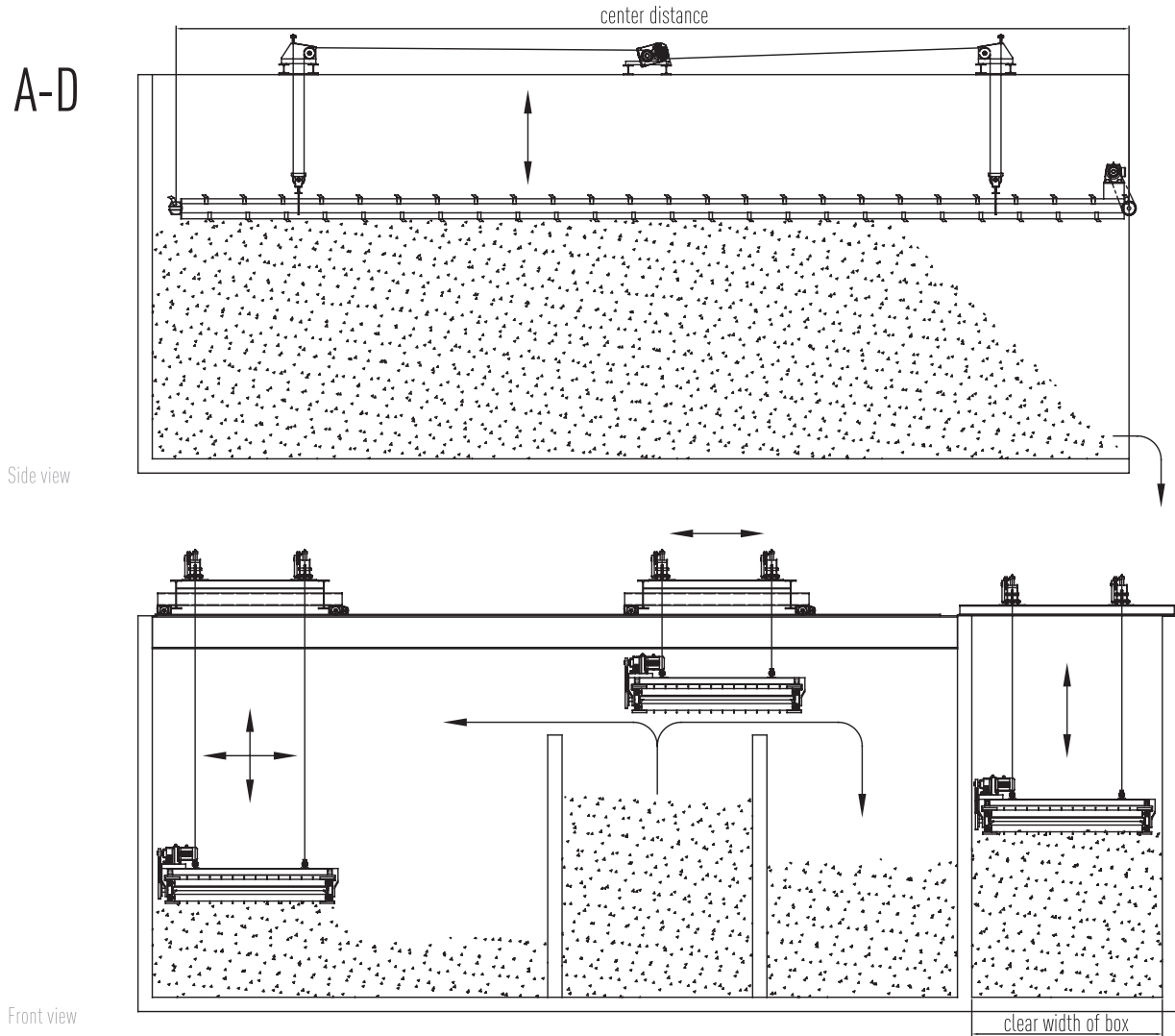
## Loading / Unloading Conveyor

Loading-/unloading conveyors are used in silos and storage bunkers containing solids such as wood chips. What makes these machines special is that they fill silos as well as empty them. Conventional systems are generally applicable for only one function. The loading-/unloading conveyor consists of a distribution-/discharge conveyor that can be moved up and down on steel wire ropes through rope guides by means of a lifting device. This provides the constant filling and emptying. The required steps are fully automatically initiated and processed by PLC (programmable logic control) through various programs. It is also possible to fill and empty a box simultaneously. The standard version of a loading-/unloading conveyor works in a storage box. If several boxes are arranged side by side, it is also possible to move the loading-/unloading conveyor on a chasis to the other boxes and to fill and empty them as well.

# Loading / Unloading Conveyor

# Vecoplan®

Example  
TYPE A-D



DETAILS		Type A	Type B	Type C	Type D
Conveying width	inch	71 / 82	122 / 130 / 142	161 / 177	177
Clear width of box	inch	90 / 102	142 / 150 / 161	181 / 197	197
Max. center distance	inch	1181	1181	1181	1181
Breaking load conveyor chain	t	11.2	11.2	11.2	16
Max. discharge capacity	y <sup>3</sup> /hr.	261.5	393	523	654

# Vecoplan®

Vecoplan, LLC  
5708 Uwharrie Road • Archdale, NC 27263  
Phone: 336-861-6070 Fax: 336-861-4329  
www.vecoplanllc.com

Vecoplan Midwest  
4005 Earnings Way • New Albany, IN 47150  
Phone: 812-923-4992 Fax: 812-923-4994  
www.vecoplanmidwest.com