



VHZ 1300 - 1600

Heavy duty wood shredders

Maximal efficiency through high throughput capacity. The compact single-shaft shredder series VHZ 1300-1600 delivers industrial users reliable processing of waste wood in continuous operation.

Vecoplan[®]

Vecoplan, LLC
5708 Uwharrie Road • Archdale, NC 27263
Phone: 336-861-6070 Fax: 336-861-4329
www.vecoplan.com

Vecoplan Midwest
4005 Earnings Way • New Albany, IN 47150
Phone: 812-923-4992 Fax: 812-923-4994
www.vecoplanmidwest.com

Universal wood shredding: Heavy duty VHZ series

The Vecoplan single-shaft shredder VHZ is compact, strong and universal, and therefore suitable for a wide range of wood scrap shredding applications. For wood processors in the primary and secondary industries, the VHZ is the economical option for different input materials and quantities directly and undosed into the shredding process.

Furniture manufacturers, carpenters, pallet producers, crate and packaging material manufacturers and larger mid-sized businesses benefit from the heavy duty VHZ series (1300-1600). The machines are made for continuous operation and large volumes. With the patented ESC-Drive the machine impresses with energy and economic efficiency and high operational reliability.

Specifications



Details		VHZ 1300	VHZ 1600
Infeed opening (W x L)	mm	1310x1605	1605x1605
Rotor dimensions	mm	d=430; L=1300	d=430; L=1595
Rotor speed	rpm	90–265	90–265
Number of counter knives	pcs.	4	4
Number of cutters	simple	28	37
	double	56	74
	triple	84	111
Motor power (frequency converter)	kW	55, 75, 90 kW (75, 90, 160 kW)	55, 75, 90 kW (75, 90, 160 kW)
Total weight (without feed hopper)	t	5,1	6,3
Screen size	mm	customer-specific	customer-specific
Dimensions (W x H x L)	mm	1955x1580x3360	2250x1580x3360

ESC[®]-Drive – an investment that pays off

With the ESC-Drive, Vecoplan has developed machines with an energy-efficient, cost-effective and economical drive of 55 to 90 kW motor power. The asynchronous drive motor with a powerful frequency converter works together with a high-performance belt drive featuring sophisticated slip control and tramp material protection.

Energy savings up to 25 %

Optimum efficiency

Tramp material protection

Maximum throughput

Low maintenance costs

Simple, accessible maintenance work

Fit for many different processes



Input material

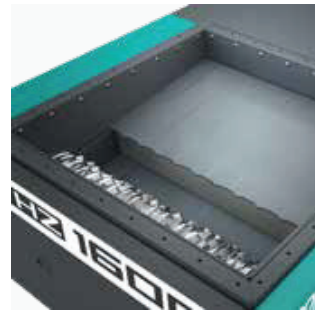
- Chipboard
- MDF
- OSB
- Hardwood waste
- Softwood
- Bark
- Pallets

Output material

- Chips for energy processing
- Material suitable for briquette production

Enduring – Precise – Solid

Shredding technology by Vecoplan



Ram

- Optimized ram geometry
- Hydraulic load-dependent material supply
- Spring pre-loaded ram sealing



Control cabinet

- Efficient and innovative control with automatic performance adjustment (material detection)
- No grid load due to peak currents
- Intuitive operation
- Integrated live service



ESC®-Drive

- Main drive with frequency converter, therefore adjustable rotor speed
- Low energy consumption, cost-effective operation
- High drive dynamics by quick reversing and re-start
- Drive belt slip control
- Tramp material protection with display
- Variably adjustable rotational speed range for power adjustment

Material discharge

- Equipped for mechanical and pneumatic discharge
- Mechanical discharge with metal separator (belt conveyor with magnet), drag chain conveyor, screw conveyor or suction socket possible



Drive components

- Powerful hydraulic unit
- Good accessibility via centralized location
- Optimized force flow between rotor and ram
- External cylinders protect against dirt



High-performance cutting unit

- Patented, profiled rotor for efficient shredding
- Easy-to-change profiled counter knife, which can be used on both sides



Bearings

- Heavy-duty steel rotor housing with chambers to protect the bearings
- Spherical roller bearing design

