



Paper Shredding From The World Leader In Shredding Technologies

Vecoplan shredders and complete secure destruction systems, can be found everywhere from small start-up plants to the largest facilities ran by the leading companies in the paper industry. Tell us your needs and Vecoplan will design a system that not only meets your needs, but fits your budget and allows for expansion as your business grows.

Why Vecoplan?

A history of design innovation

With over 50 years experience in the shredding industry, Vecoplan shredding systems for paper are where performance meets reliability. The design of Vecoplan shredders and related products, particularly the single-shaft shredder, is extremely unique in its universal capability to process a wide range of different waste materials. The Vecoplan shredder design is a natural when it comes to secure shredding and document destruction, as well as use for baler prep for signature waste at printers and converters.

Vecoplan History

- 1969: Company is founded in Bad Marienberg, Germany
- 1973: Wood Recycling Begins
- 1978: In house production begins
- 1984: VAZ introduced
- 1989: "U" Rotor design introduced
- 2000: Vecoplan LLC opens operations in USA
- 2005: HiTorc motor introduced
- 2005: Vecoplan LLC doubles in size
- 2019: Vecoplan introduces plant-based pierce-&-tear for document destruction



What Sets Vecoplan Apart?

Vecoplan industrial paper shredders are the leading technology in the document destruction industry, the printing industry and the paper recycling industry. Vecoplan single-shaft rotary shredders feature low speed, high torque, low noise processing of paper, cardboard, plastics, and a variety of other materials. Fed vertically via a hopper positioned above the cutting chamber, you simply dump material into the hopper, push a button and walk away. With continuous feed commercial shredders, material can also be fed into the hopper continuously with an inclined conveyor. A heavy-duty industrial screen fits snugly around the cutting rotor and determines the particle output size. Vecoplan screens are offered with a variety of hole sizes from 3/8" to 6". Quick & easy to change, these inexpensive screens allow you to not only control but also change output particle size as needed for specific applications. A Vecoplan industrial document shredder features a low speed, low noise and high torque design that maximizes throughput.

- Dump & Run Capabilities
- Ultimate Flexibility in Document & Product Destruction
- Jam-Free Operation
- Guaranteed Throughput
- Easy & Low Cost Maintenance
- Secure Controls
- Minimal Dust
- Highest Security



Document Destruction



NAID Specification: 2-1/4"



Government Specification: 3/8"

Printer's Waste



Die Cut Skeletons



Rejected Product Overruns



Hard & Soft Books



Printed Material



Corrugated, Trim Waste, Labels, & Envelopes



Packaging



Rolls

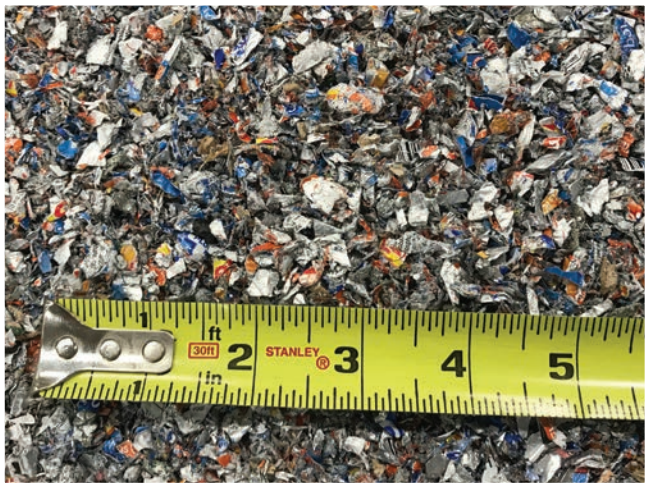


Cores



Product Destruction

Shred Size Samples



3/8" Screen



1" Screen



2-1/4" Screen



3" Screen



4" Screen



No Screen

Auxiliary Equipment

Vecoplan 600

Pierce-&Tear Shredder



DETAILS		Vecoplan 600
Number of motors	qty	2
Drive motor HP	HP	60 (2 x 30)
Knife thickness	inch	5/8"
Number of knives	qty	108
Knife diameter	inch	8"
Cutting chamber	inch (WxD)	24" x 15"
Throughput	lbs / hr.	Up to 6,000

The VECOPLAN 600 Pierce & Tear Shredder sets new standards for a compact, powerful shredding solution. Twin 30HP motors provide greater power for larger throughputs - up to 6,000 lbs/hr.

- Pierce and Tear Shear Shredder - High Throughput
- Easy Accessibility
- Large Infeed Hopper
- Heavy Duty Construction
- Oversized Drivetrain
- PLC Control Panel
- ISO 9001 Manufactured
- Up to 7,000 lbs/hr Throughput

Vecoplan

Auxiliary Equipment



Infeed Conveyors



PATZ Conveyors



KKF Conveyors



Box Dumpers



Magnetic Head Pulleys



Cross Belt Magnets



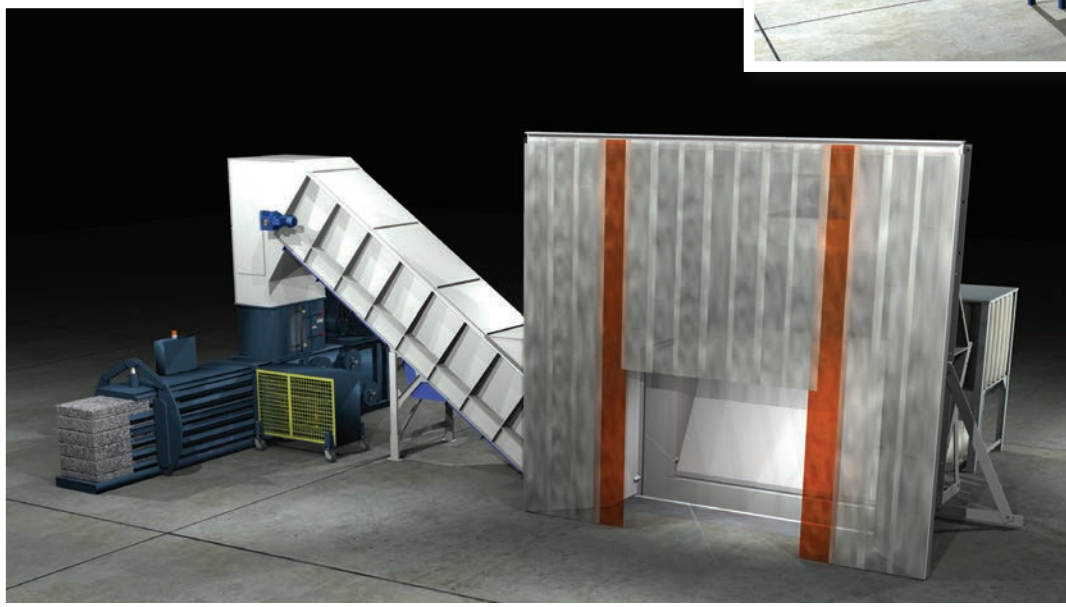
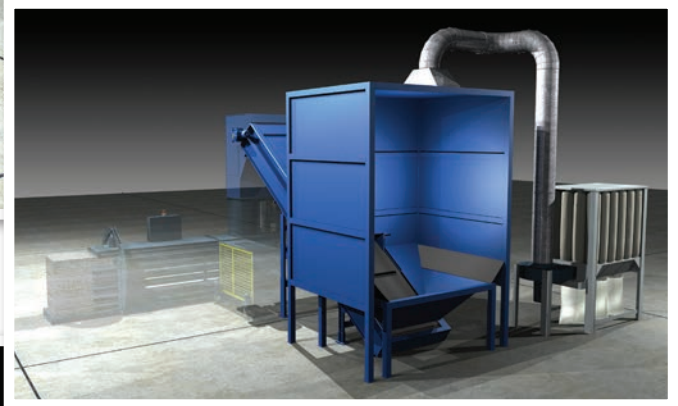
Dust Collection Systems

Truck Unloading Systems

Designed specifically to expedite the unloading of trucks while containing and removing the intrinsic dust, Vecoplan's Truck Unloading System greatly reduces the need for any manual labor when unloading your truck and feeding your baler. The system includes an unloading containment module constructed of steel that allows drivers to back the truck in, unload and pull away. The containment module includes an optional built-in pneumatic dust collection system and an enclosed inclined conveyor with feed chute that automatically transfers the shredded paper to your baler. Vecoplan's Truck Unloading Systems feature a small footprint, quick and simple installation, seamless operation, and an economical price tag.



Above Ground System



Pit Style System

- Small Footprint
- Optional Pneumatic Dust Collection System To Control Dust. Additional Collection Point on Baler Controls Baler Dust.
- Controls with Baler / Conveyor Interlocks Automatically Meters Material Into Baler
- Durable Vinyl Strips on Front Eliminates Need for Doors, Remaining Enclosure is Fabricated with Steel which Contains All Material, Eliminating Spillage and Mess
- Enclosed Incline Conveyor for Baler Loading

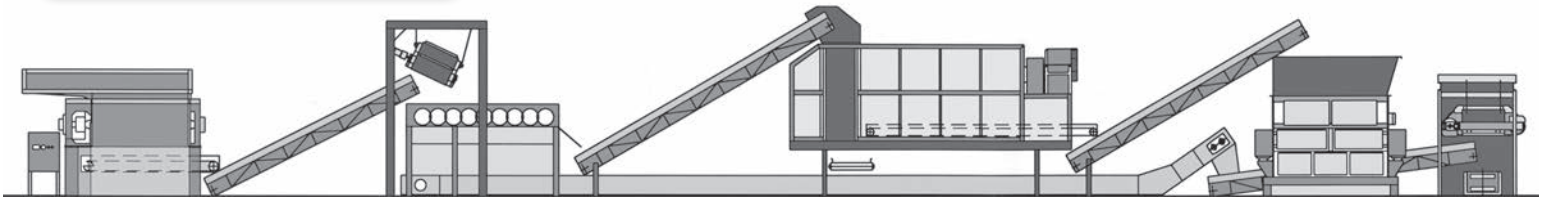
Vecoplan - Your Total System Solution



We provide complete material handling systems and design engineering including conveyors, pneumatics, metal detection and separation. American electrical control panels and components are available and may be fabricated to your specifications.

Vecoplan understands that installing new equipment can disrupt production operations. New equipment can create new demands on your present electrical system. That's why we include a review and analysis of your present electrical components.

Vecoplan will help you plan for the additional equipment and prepare your present system to minimize any disruption to your operation.



Learn More at
www.vecoplanllc.com

Vecoplan®

Vecoplan, LLC
5708 Uwharrie Road • Archdale, NC 27263
Phone: 336-861-6070 Fax: 336-861-4329
www.vecoplanllc.com



Vecoplan Midwest
4005 Earnings Way • New Albany, IN 47150
Phone: 812-923-4992 Fax: 812-923-4994
www.vecoplanmidwest.com