

Vecoplan Material Handling Infeed Conveyors

RMH Series



RI 36/20

- Sliderbed conveyor of a reinforced steel trough with 12" high straight sidewalls and feed hopper
- Dimension: 20' long bed length by 10' high discharge, 36" width, maximum incline 25 degrees
- Adjustable support legs with mounting pads
- Bolt-on infeed hopper
- PVC belting with metal cleats at 72" centers, other belts available
- Standard belt speed: 54 fpm
- Heavy duty crowned head and winged tail pulleys
- 2 HP TEFC motor, 230/460V, 3 PH, 60 HZ
- Maximum load / full load capacity: 3,000 lbs

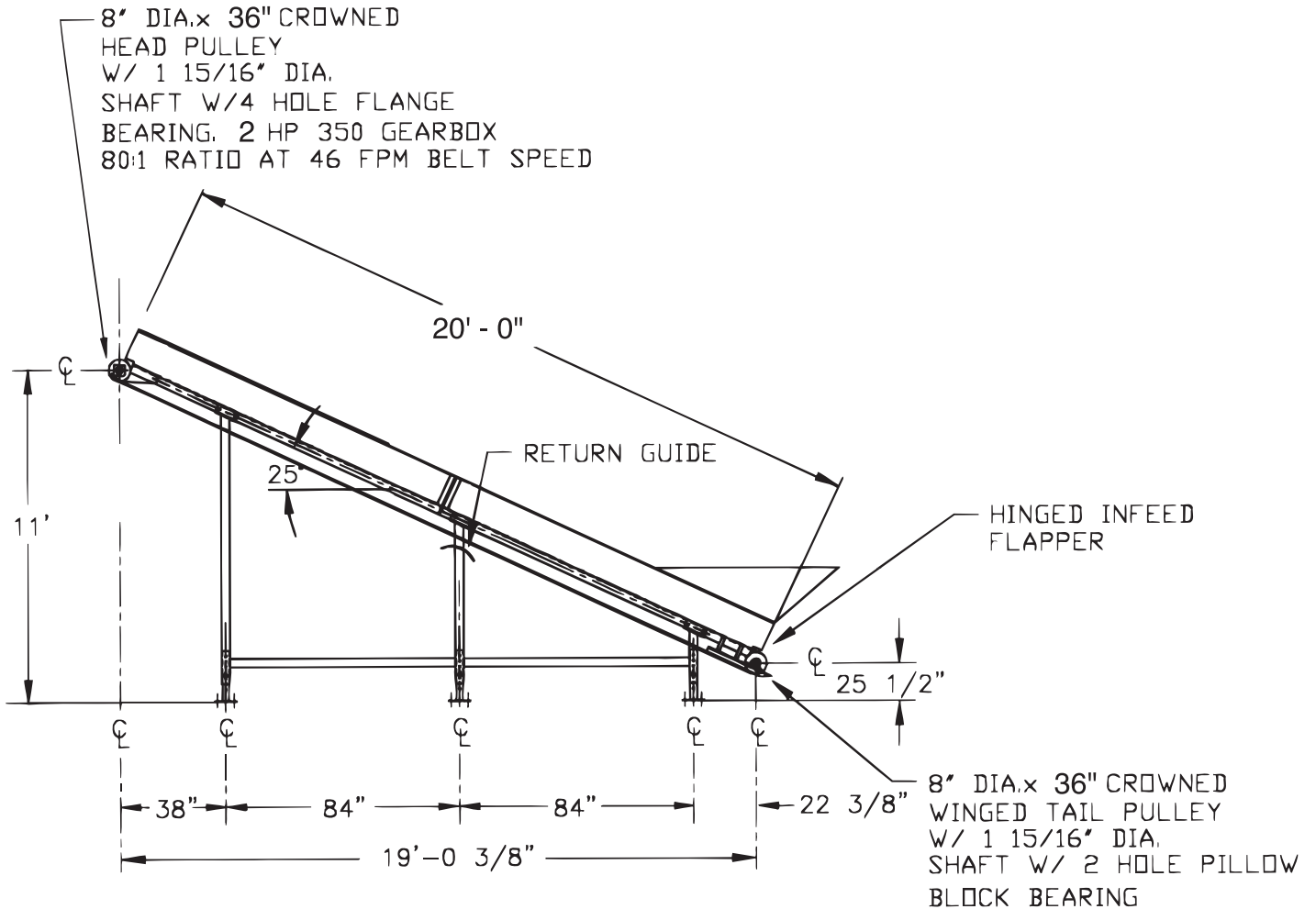
Heavy duty inclined conveyor used for loading large purgings and blow moldings, bales, film logs or wood scraps into shredders

Vecoplan

sustainable technology

THE ULTIMATE SHREDDING MACHINE

Infeed Conveyors



Vecoplan

sustainable technology

P.O. Box 7224 • High Point, NC 27264
Phone: (336) 861-6070 • Fax: (336) 861-4479
www.VecoplanLLC.com